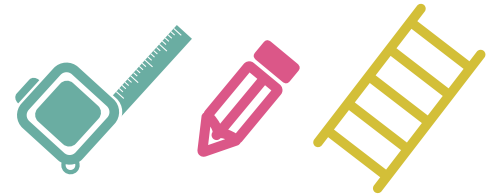


MEASURING GUIDE

MEASURE

Before measuring for your shutters, you'll need a tape measure, plus a pen and paper to write the measurements down.



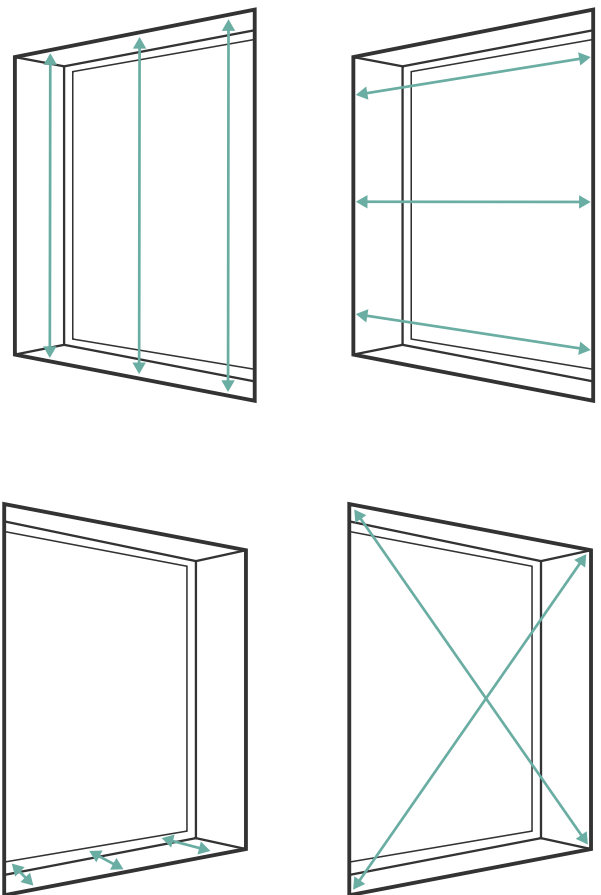
RECESS FIT SHUTTERS

Sometimes known as 'inside mount', this is where the shutters sit inside the window frame.

1. Measure the inside width of the recess in at least 3 places – top, middle & bottom. Use the smallest measurement.
2. Measure the inside height of the recess in at least 3 places – left, middle & right. Again, use the smallest measurement.
3. Now measure the depth of the recess. Is there room for the louvre to open and close? The minimum recess depth must be at least 70mm to allow for the louvre to operate beyond the back of the panel.¹
4. Check for squareness by measuring the diagonals. If there is a difference of more than 10mm, an outside mount is the only option.

Notes:

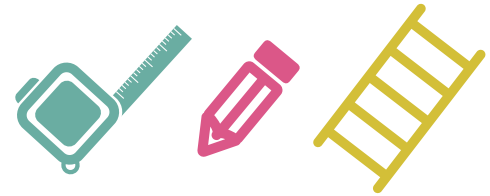
¹ Be mindful of window winders or handles that reduce the space for louvres to operate in. Also be aware that if your window has internal flyscreens fitted, these may not be able to be removed once you have installed your shutters.



MEASURING GUIDE

MEASURE

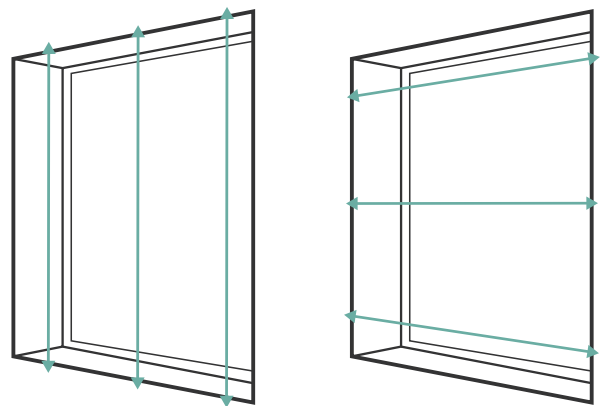
Before measuring for your shutters, you'll need a tape measure, plus a pen and paper to write the measurements down.



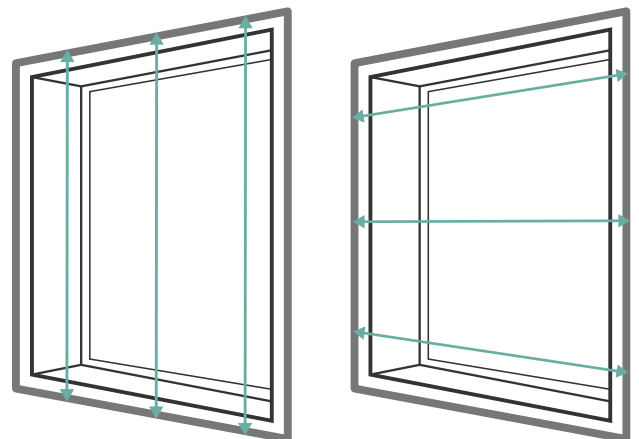
FACE FIT SHUTTERS

Also known as 'outside mount', this is where the shutters will be mounted on the wall and cover the total window area.

1. Measure the outside width of the window, edge-to-edge in at least 3 places – top, middle & bottom. Note down the largest measurement to for input into the site.
2. Measure the outside height of the window, edge-to-edge in at least 3 places – left, middle & right. Again, note down the largest measurement to for input into the site.
3. If your window has an architrave, you can fit to the architrave, however it may be worth giving us a call to assess how best to measure for appropriately for it.
4. If you have a window sill, simply measure as above but ensure you select the 3-sided frame option when entering your specifications.



Without architrave



With architrave