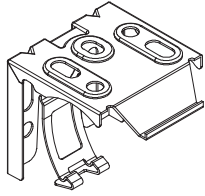


CORDLESS CELLULAR SHADES INSTALLATION

PARTS INCLUDED



Mounting Brackets



2x Hold Down Bracket
(outside mount only)



Installation
Screws



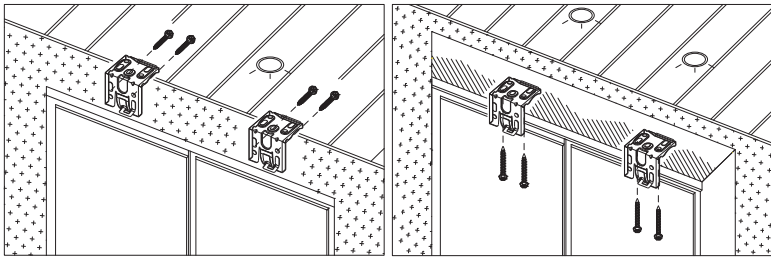
1x Clear Bottom Handle

IMPORTANT NOTES:

1. Please check that all parts have been supplied before you begin to assemble your new Cellular Shades.
2. Ensure that the blind is mounted level for correct operation.

Installation Step

1 Attach mounting brackets to wall, window frame or ceiling

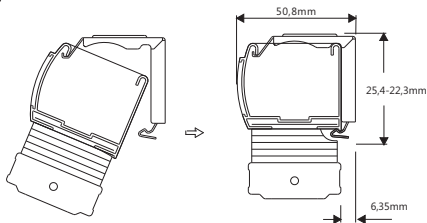


To the wall or front of the window frame

To the ceiling or top of the window frame

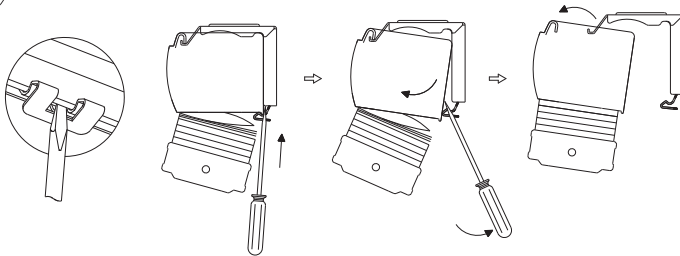
1. Position the end brackets for fixing (either face or top) ensuring that the brackets are fixed approximately 50mm from the end of the blind. The center bracket (required for blinds exceeding 1200mm width) may be positioned as required.

2 Attach head rail to the installation brackets

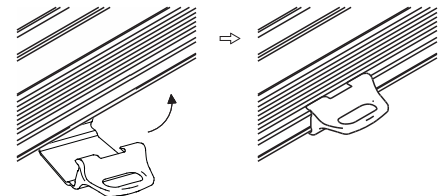


2. Position the front edge of the track into the front hooks of the installation bracket, and gently push upwards and the track will "snap" into position.

3 How to remove head rail from the installation brackets?



4 Attach the bottom handle



Please allow 24 hours for your shade to drop to its actual height when first installed due to the nature of the fabric.

To Operate The Blind

Raising: Push the bottom handle upward until the blind reaches the desired height.

Lowering: Pull the bottom handle downward until the blind reaches the desired height.

WARNING!

Blinds must be fitted with safety devices provided to comply with legal requirements. Please turn over leaflet for instructions to fit safety devices.