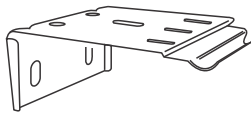


CORDED CELLULAR SHADES INSTALLATION

PARTS INCLUDED



Mounting Brackets



2x Clear Hold Down Bracket
(outside mount only)



Installation
Screws



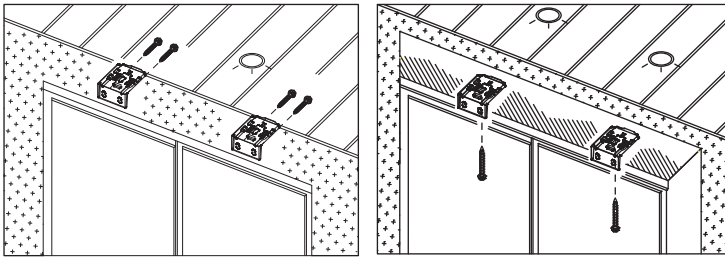
1x Clear Cord Cleat

IMPORTANT NOTES:

1. Please check that all parts have been supplied before you begin to assemble your new Custom Cellular Shades.
2. Ensure that the blind is mounted level for correct operation.

Installation Step

1 Attach mounting brackets to wall, window frame or ceiling

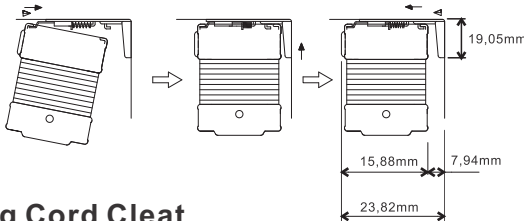


To the wall or front of the window frame

To the ceiling or top of the window frame

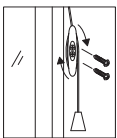
1. Position the end brackets for fixing (either face or top) ensuring that the brackets are fixed approximately 50mm from the end of the blind. The center bracket (required for blinds exceeding 1200mm width) may be positioned as required.

2 Attach head rail to the installation brackets



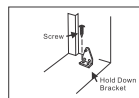
2. Position the front edge of the track into the front hooks of the installation bracket, and gently push towards the window then push upward and the track will "snap" into position.

3 Installing Cord Cleat



3. Cord cleats must be installed to comply with Child Safety Regulations. The cleats must be installed at least 1600mm above floor level, because a child is capable of unwinding a cord from a cleat. Fasten the cleats to the wall using the screws provided. Do not use tape or glue to attach the cleats.

4 Installing Hold Down Bracket (outside mount)



4. The use of hold down brackets is recommended for additional child safety, but is not a requirement for the normal functioning of the blind. Using the screws provided, attach the base of the hold down bracket to the window facing or sill. Additional fixing can also be fitted through the side of the bracket (where suitable). Snap pin on end caps into the holes in the hold down brackets.

Please allow 24 hours for your shade to drop to its actual height when first installed due to the nature of the fabric.

To Operate The Blind

Raising: Pull the cord downward until the blind reaches the desired height; release the cord, and the blind will lock automatically.

Lowering: Hold the cord at eye level and move it to the left, pulling down gently until the cord lock releases. Allow the cord to pass through until the blind reaches the desired level. Move the cord to the right and release, and the blind will lock automatically.

WARNING!

Blinds must be fitted with safety devices provided to comply with legal requirements. Please turn over leaflet for instructions to fit safety devices.



WARNING - ALL WINDOW COVERINGS WITH CORD OR CHAIN

To avoid creating a possible strangulation hazard for children, this corded internal window covering must be installed in such a way that a loose cord cannot form a loop 220mm or longer at a height of less than 1600mm above floor level.

NOTE: In accordance with this safety legislation the installation of this product must adhere to the following procedures to avoid creating a possible strangulation hazard for children.

Check that there are no loose cords that a child is able to reach from the floor, in their cot or bed or by climbing on furniture. Tie any cords out of reach and move away from any furniture that children might use to climb on to access operational cords.

Where you install a cord guide lower than 1600mm above floor level ensure that a child cannot remove the cord from the cord guide.

Where you install a cord guide lower than 1600mm above floor level, ensure the cord is sufficiently secured to prevent a loop 220mm or longer from being formed.

Where a cord cleat is used to secure the cord, the cleat must be installed at least 1600mm above floor level because a child is capable of unwinding a cord from a cleat.

NOTE: Compliance with all the previous recommended legal safety standards is mandatory.

NOTE: The Cord Guide must be installed using both screws to comply with the safety regulations.

Once the cord guide is attached to the wall (or other structure) pull the cord with a 70N force for 10 seconds.

Note that 70N is approximately equal to 7kg weight, roughly the weight of FOUR 2-litre milk bottles.

Note that the point of the pull test is to ensure that the cord guide cannot be pulled off its location by a child who might entangle him/herself with its cord. Repeat the pull test at a minimum of four angles, varied evenly through the possible range of motion. The cord guide must remain firmly attached to the wall (or other structure). If the guide is no longer firmly attached, i.e. is pulled off the wall or becomes loose on its mountings, then there is a high chance that it can be pulled off the wall (or other structure) by a child and will become a child strangulation hazard.

On plasterboard, the cord guide must be attached to the studs behind the plasterboard using the appropriate self-tapping screws.

NOTE: When installing into plasterboard the Cord Guide must be mounted at a height of 1600mm or higher from the floor.

For masonry walls, pre-drill small holes the size of the appropriate screw anchors at the marked location. Insert the anchors at the holes and then fix the cord guide with the appropriate screws.

Make sure the attached cord guide passes the pull test described above.

NOTE: In accordance with this safety legislation the installation of this product must adhere to the following procedures to avoid creating a possible strangulation hazard for children.